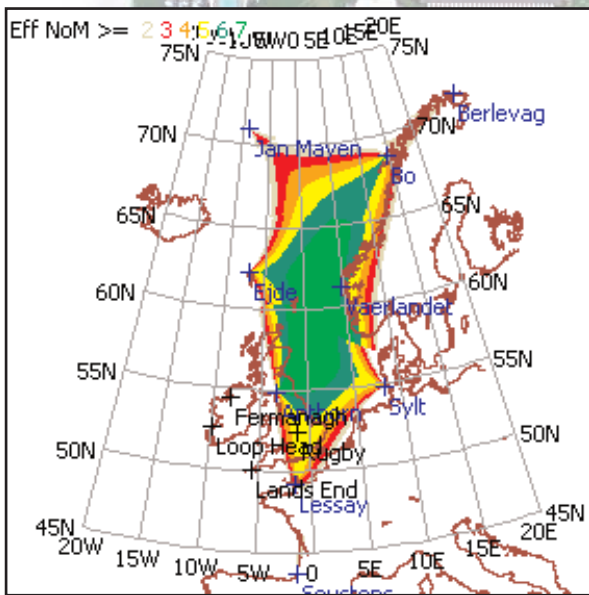


# Emeritus Solutions Ltd

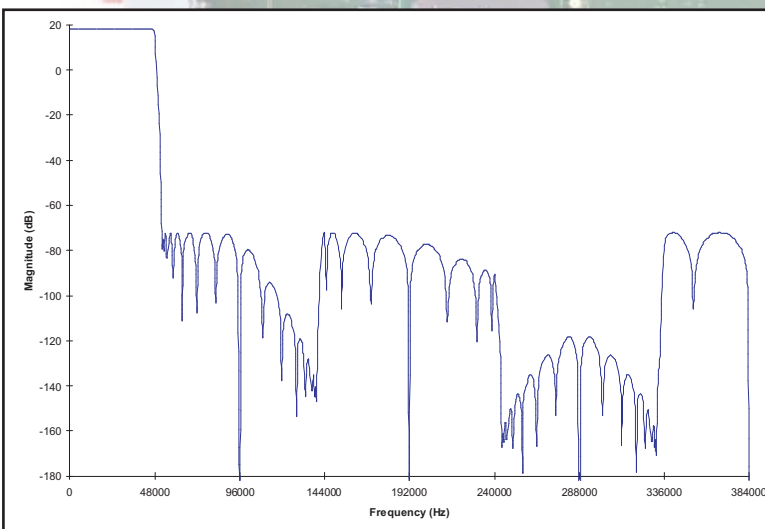
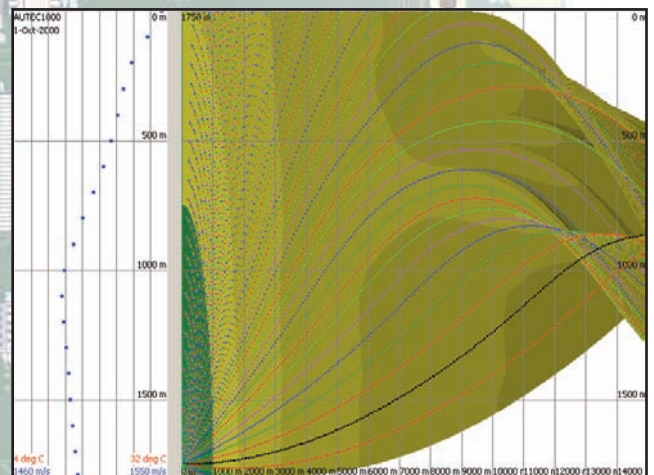


## Navigation Solutions

Layout analysis and planning  
Trilateration processing  
Residuals analysis  
Slant range plots  
Hydrophone boxing in X, Y (& Z)  
Bespoke processing and analysis  
Recording and real time displays  
Task based conning aids

## Underwater Acoustics

Propagation analysis  
Sonar equation assessment  
Waveform and processing design  
Acoustic system grooming  
Recording and bespoke analysis  
System and transducer calibration  
Going to sea and making it so



## Signal Processing

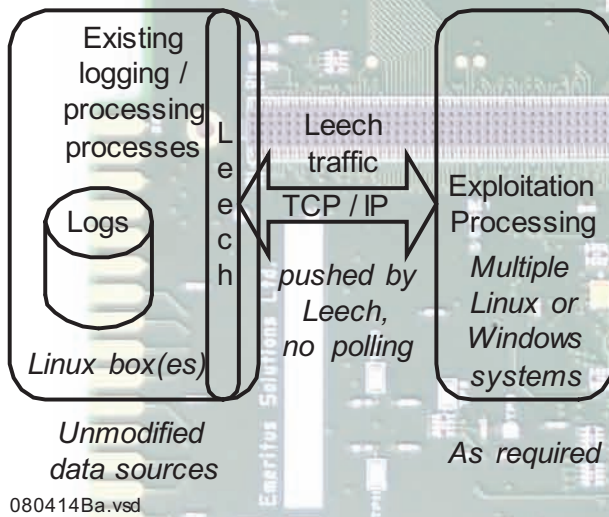
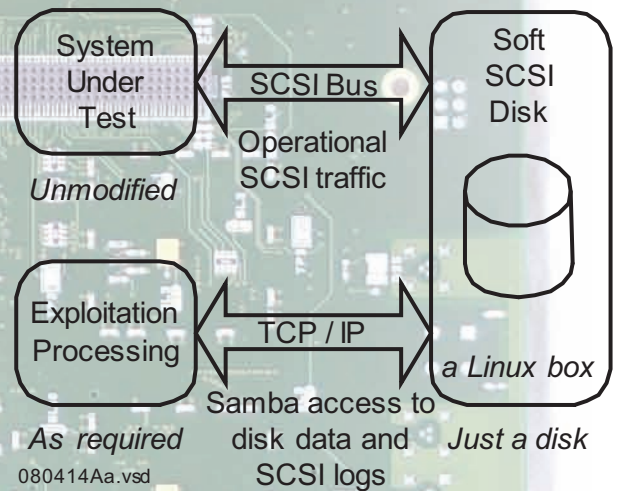
DSP algorithms  
Filter analysis and design  
FFTs, windows and LOFAR  
Correlation & normalisation  
DSP hardware specification  
DSP processing software  
DSP assembler coding  
Recording and analysis



# Emeritus Solutions Ltd

## SCSI Target

A soft SCSI disk for the analysis of unmodified, embedded systems disk traffic and data. Mega bytes of cache back the parallel SCSI interface to provide fast disk writes. The client interface includes a SCSI command log, R/W journal and real time access to the disk data.



## Leech

Sucks data out of Linux logs without cooperation from the source process(es) and serves the data over TCP/IP. Leech facilitates the analysis and extension of applications. Leech requires no modification of existing Linux applications, and is ideal for NMEA and ASCII sensor data streams.

## Technology Base

Underwater acoustics and Sonar  
Trilateration processing and GNSS  
Digital signal processing: Algorithms and implementation  
Statistics and engineering mathematics  
Computer systems and programming  
Digital electronics: VHDL, FPGAs, hardware design, JTAG  
Microcontrollers: USB, CAN  
Materiel: Hydrophones, projectors, amplifiers, instrumentation

**Contact: Eur Ing Dr Martin Bishop CEng FIEE**

(01305) 262806 Tel / Fax  
(07778) 599209 Mobile  
Mjd.Bishop@Emeritus-Solutions.com  
www.Emeritus-Solutions.com

22 Herringston Road  
Dorchester  
Dorset  
DT1 2BS